

VOL. 1 ISSUE 2 • JULY 2021

ASSESSMENT QUARTERLY

UT Knoxville's Assessment Steering Committee Quarterly Newsletter



Need inspiration? Exemplar assessment reports available on SharePoint

The Assessment Steering Committee at UT Knoxville has collected reports from colleges across the university to serve as exemplars for program assessment report writers. Reports in this collection identify measurable outcomes, provide data that measures student learning, provide data analysis on whether or not the outcome has been met, and identify strategies for improving student learning.

Exemplar program assessment reports can be found [here](#).

Still stuck?

Check out this ["Top 10 Considerations When Writing & Reviewing an Assessment Report"](#) tip sheet!

???



Other resources are also available at <https://oira.utk.edu/assessment-planning-and-resources/>

This issue:

Exemplar Assessment Reports

Summer Assessment Conference Takeaways

What is a "Faculty Reviewer"?

Upcoming Workshops & Events

AALHE 2021 Online Conference: Exemplars, Encores, and Enigmas

June 7 - June 10, 2021

Members of the assessment community at UT Knoxville, including faculty, staff, and graduate students, attended the Association for the Assessment of Learning in Higher Education (AALHE) 2021 Online Conference in June.

Highlights from the conference encouraged assessment professionals to design assessment processes and plans that are rooted in university & local cultures, pausing to consider who the assessment is for. By honoring students' value systems when creating assessment plans, programs are able to make a more meaningful impact on student learning.

Other content focused on ensuring policies and procedures are in place and implemented. Creating outcomes that the program has adequate resources to measure, gather data, and analyze is vital to the success of program assessment. Session leaders also challenged attendees to use institutional mission, vision, and goals to inform student learning outcomes.



UT Knoxville is an Institutional Member of the Association for the Assessment of Learning in Higher Education (AALHE). The Assessment Steering Committee coordinates membership tasks for the university.

AALHE's mission is to develop and support a community of educators and inform assessment practices in higher education to foster and improve student learning and institutional quality. As a member of AALHE, you have access to a wealth of resources (including a book club and discussion groups!) that will help you as an assessment professional, including networking opportunities, recorded webinars, community forums, and more.

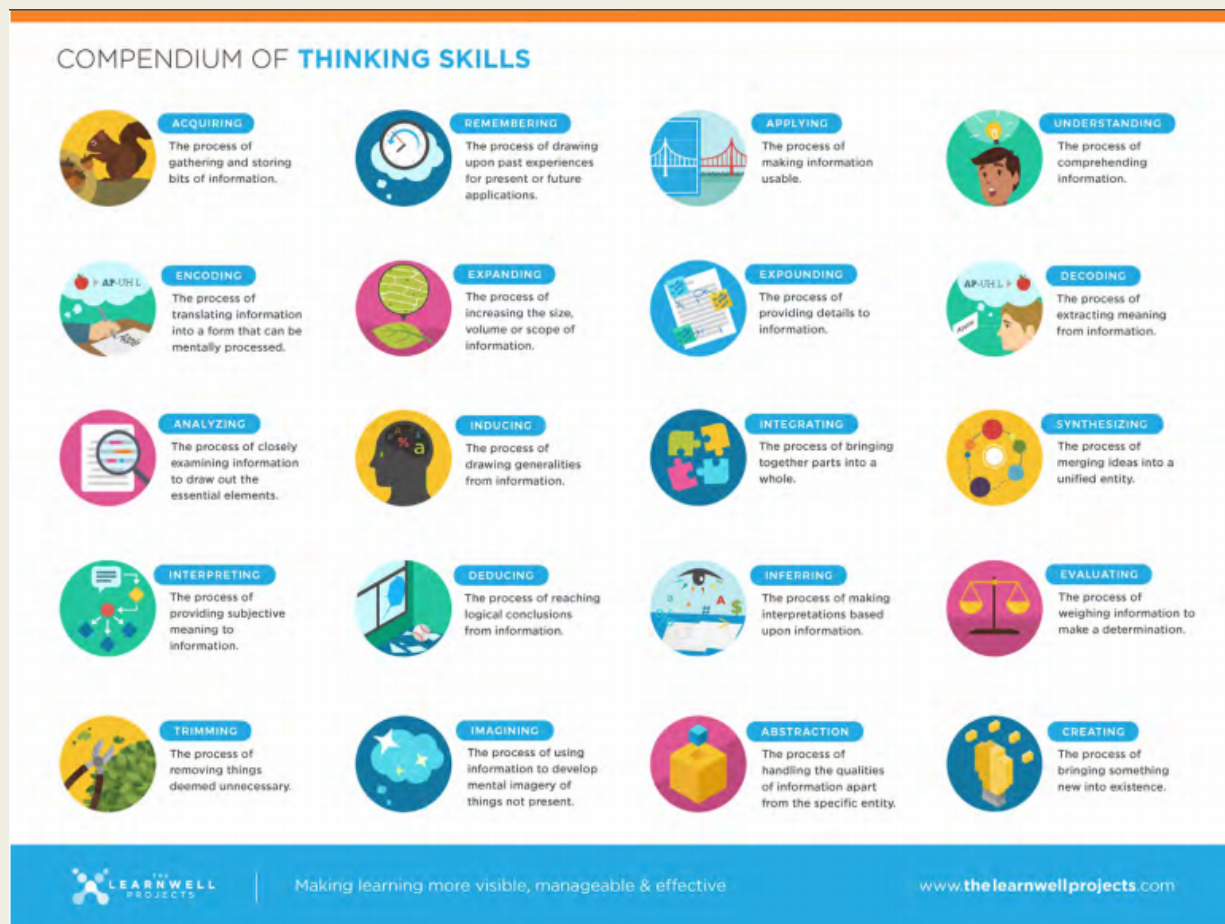
To create a FREE individual profile under the institution's membership, please contact Ashley Browning at ashleyb@tennessee.edu.

SACSCOC 2021 Virtual Institute on Quality Enhancement and Accreditation

July 19 - July 22, 2021

Members of the Assessment Steering Committee attended the 2021 Institute, held virtually this year. Program assessment was discussed in many sessions in correlation with student learning improvement.

Session leaders encourage assessment professionals to identify and implement assessment plans and processes that are sustainable and meaningful to the academic program. Remember that the transfer of knowledge is dependent upon the skills the student possesses. The knowledge progression in an academic program may not match what the student is capable of doing at that moment, so goals can evolve over time. The diagram below was provided to illustrate a roundup of skills students use in the transfer of knowledge.





Assessment Day 2021 will be held September 21-22, 2021.

A call for reviewers from each college has been sent to associate deans in time to work with department chairs to consider committee assignments and other faculty workload considerations.

So, what IS a faculty reviewer?

Faculty reviewers are volunteers who read and score program assessment reports for the UT Knoxville meta-assessment process. Reviewers are trained during Assessment Day and then paired with a colleague, collaborating to peer review 12 assigned program assessment reports.

Reviewers check in with a member of the Assessment Steering Committee with questions and/or to finalize their Feedback Forms in the Planning module no later than October 31st. Once this is completed, *non-administration* employees (e.g., faculty members, staff members) are eligible for a \$400 stipend. Payment of the stipend will be included in the paycheck after your task is completed (taxes applied).

Interested in serving as a reviewer of program assessment reports as part of the institution's 2020-2021 meta-assessment process? Speak with your department head/director or contact assessment@utk.edu.

Program Assessment Reports Due September 15



Remember assessment reports for the previous academic year are due for review on September 15th. Program reports are promptly distributed to reviewers for scoring and feedback, so please mark your calendars for this deadline!

Assessment Skills Framework Survey

Our assessment community is growing! As the Assessment Steering Committee prepares workshops for the 2021-2022 academic year, we want to pause to understand your needs. A survey created by assessment professionals at James Madison University will be disseminated in early September in an effort to gauge where we are most comfortable in our assessment skills and areas where we have room to grow, collectively. This survey may also be valuable for you, personally, to inventory where you are in your development as an assessment professional in your program.

We invite you to participate in this anonymous, voluntary survey and encourage you to check out the following publication highlighting the Assessment Skills Framework Survey:

[Assessment Professional Development Competencies: Applications of the Assessment Skills Framework](#)

Is your program doing something great? Want to share tips and tricks you have learned along the assessment journey?

Contact [Ashley Browning](#) to be featured as our Program Spotlight!